

Fig. 710UF
IRON BODY GATE VALVE

Features & Benefits

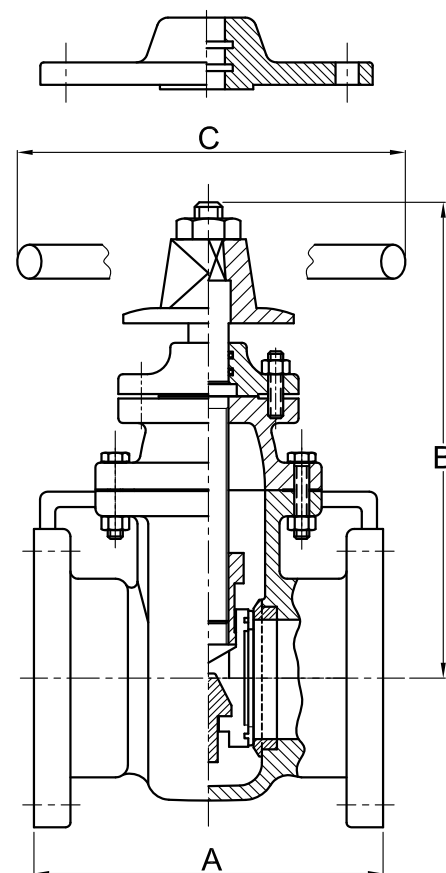
- Fire protection valve. UL listed. FM approved.
- Iron body. Bronze mounted. Non-rising stem. Parallel seats. Double disc.
- Mechanical joint ends conform to AWWA C111 and ANSI A21.11.
- Flanged ends to ANSI B16.1 Class 125. Other flange types available.
- Working pressure: 175 psi non-shock cold water.



Material List

Part Name	Material	ASTM SPEC.
Body	Cast Iron	ASTM A126-B
Disc	Cast Iron	ASTM A126-B
Body Seat Ring	Cast Bronze	ASTM B62
Disc Seat Ring	Cast Bronze	ASTM B62
Stem Nut	Cast Bronze	ASTM B62
Wedge Pin	Cast Bronze	ASTM B62
Bonnet	Cast Iron	ASTM A126-B
Box	Cast Iron	ASTM A126-B
Base Plate	Cast Iron	ASTM A126-B
Hand Wheel	Cast Iron	ASTM A126-B
Operation Nut	Cast Iron	ASTM A126-B
Stem	Stainless Steel	AISI 420
Gasket	Non-Asbestos	
O Ring	EPDM	
Hex.Head Bolt	Steel	ASTM A307-A
Stud Bolt	Steel	ASTM A307-A
Nut	Steel	ASTM A563-A

- Note: 2-1/2" has single disc.



Dimensions (mm / Inch)

Valve Size	65mm / 2-1/2"		80mm / 3"		100mm / 4"		150mm / 6"		200mm / 8"		250mm / 10"		300mm / 12"	
	mm	Inch	mm	Inch	mm	Inch	mm	Inch	mm	Inch	mm	Inch	mm	Inch
A	190.5	7-1/2	203.2	8	228.6	9	266.7	10-1/2	292.1	11-1/2	330.2	13	355.6	14
B	337	13-1/4	306	12-1/16	347	13-21/32	459	18-1/16	533	20-31/32	625	24-19/32	717	28-15/64
C	178	7	254	10	254	10	355.6	14	355.6	14	406.4	16	457.2	18

■ Note: Design and materials are subject to change without notice.