

CLASS 125 IRON BODY CHECK

- Bolted Bonnet, Horizontal Swing, Renewable Seat and Disc, Bronze Mounted.
- Conforms to MSS SP-71 Type 1, Flanged End and Drilling to ANSI B16.1
- Working Pressure: 125 PSI Steam to 450°F or 232°C
200 PSI Non-Shock Cold Water, Oil or Gas to -20°F to 150°F or -29°C to 66°C
- Cracking Pressure: 0.75 to 1 PSI

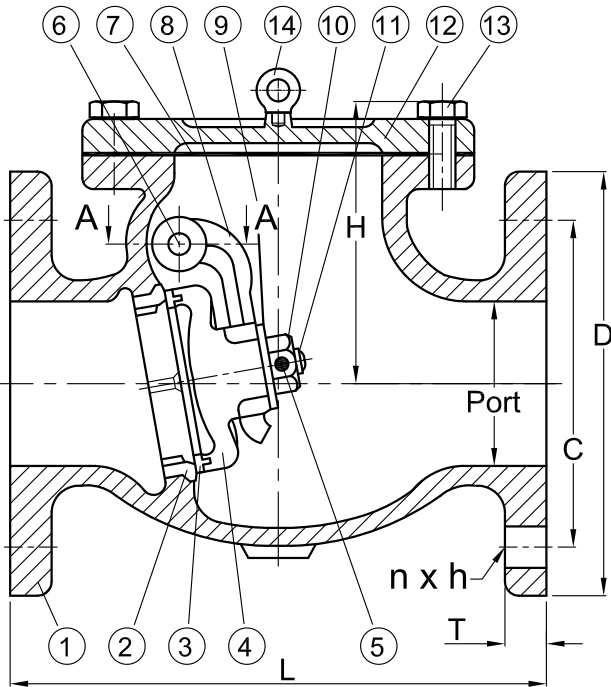
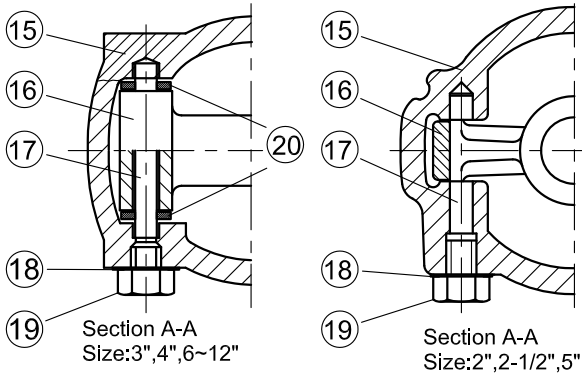


Fig: 763A



Section A-A
Size: 3", 4", 6~12"

Section A-A
Size: 2", 2-1/2", 5"

Pressure/Temperature*

Temp (°F)	Pressure (PSI)
-20 to 150	200
200	190
225	180
250	175
275	170
300	165
325	155
350	150
375	145
400	140
425	130
**450	125

* P/T listed is for 2 to 12 inch, 200 WOG ASTM A126 Class B gray iron valves. Temperatures shown are that of the pressure containing parts of the valve and are assumed to be equal to the contained fluid's temperature. Use of a pressure rating at a pressure containing temperature other than the contained fluid's is at the responsibility of the end-user.

** Maximum temperature for bronze trim.

MATERIAL LIST

Item	No.	Part	Material	Specification	Qty	Remarks
1	01	Body	Cast Iron	ASTM A126-B	1	
2	08B	Body Seat Ring	Cast Bronze	ASTM B62	1	
3	08D	Disc Seat Ring	Cast Bronze	ASTM B62	1	
4	03	Disc 2", 2-1/2", 5"	Cast Iron	ASTM A126-B	1	2"~1/2"5"
		Disc 3", 4", 6~12"	Ductile Iron	ASTM A536	1	3"4"6~12"
5	22S	Split Pin	Stainless Steel	ASTM A276-304	1	
6	22H	Hanger Pin	Brass	ASTM B16	1	
7	14	Gasket	Non-Asbestos		1	
8	05	Hanger	Ductile Iron	ASTM A536	1	
9	21	Washer	Steel		1	
10	27	Nut	Steel	ASTM A307-A	1	
11	28F	Full Thread Bolt	Steel	ASTM A307-A	1	2"~1/2"5"
12	02	Cover	Cast Iron	ASTM A126-B	1	
13	28H	Hex. Head Bolt	Steel	ASTM A307-A	1Set	
14	28K	Eye Bolt	Stainless Steel	ASTM A276-304	1	6"~12"
15	01	Body	Cast Iron	ASTM A126-B	1	
16	05	Hanger	Ductile Iron	ASTM A536	1	
17	22H	Hanger Pin	Brass	ASTM B16	1	
18	14S	Gasket	Non-Asbestos		1	
19	28P	Side Plug	Brass	ASTM B16	1	
20	21S	Washer	Brass	ASTM B16	2	3"4"6~12"

■ Body has five Tapping Bosses.

Cv & Weight

SIZE	2	2-1/2	3	4	5	6	8	10	12
Cv	45	75	110	210	345	530	1010	1580	2460
Wt.(Lbs)	25	36	46	81	115	150	253	442	638

Dimensions

Unit: inch

Size	Port	H	L	C	D	T	nxh
2"	2.0	4.65	8.0	4 ³ / ₄	6	5 ⁵ / ₈	4x ³ / ₄
2-1/2"	2.5	5.37	8.5	5 ¹ / ₂	7	1 ¹¹ / ₁₆	4x ³ / ₄
3"	3.0	5.77	9.5	6	7 ¹ / ₂	3 ³ / ₄	4x ³ / ₄
4"	4.0	6.65	11.5	7 ¹ / ₂	9	1 ¹⁵ / ₁₆	8x ³ / ₄
5"	5.0	7.78	13.0	8 ¹ / ₂	10	1 ¹⁵ / ₁₆	8x ⁷ / ₈
6"	6.0	8.47	14.0	9 ¹ / ₂	11	1	8x ⁷ / ₈
8"	8.0	10.40	19.5	11 ³ / ₄	13 ¹ / ₂	1 ¹ / ₈	8x ⁷ / ₈
10"	10.0	11.91	24.5	14 ¹ / ₄	16	1 ³ / ₁₆	12x1
12"	12.0	13.52	27.5	17	19	1 ¹ / ₄	12x1

■ Note: Design and materials are subject to change without notice.



EVER METAL INDUSTRY CO., LTD