

CLASS 125S 3% NICKEL IRON BODY CHECK

- Bolted Bonnet, Horizontal Swing, Renewable Seat and Disc
- Conforms to MSS SP-71 Type 1, Flanged End and Drilling to ANSI B16.1
- Working Pressure:
125 PSI Steam to 450° F or 232° C
200 PSI Non-Shock Cold Water, Oil or Gas to -20° F to 150° F or -29° C to 66° C

MATERIAL LIST

Item	No.	Part	Material	Specification
1	01	Body	Cast Iron Ni	3% Nickel
2	08B	Body Seat Ring	Stainless Steel	ASTM A351 CF8M
3	08D	Disc Seat Ring (2½", 4"~12")	Stainless Steel	ASTM A351 CF8M
4	03	Disc	(2", 3") Stainless Steel (2½", 4"~12") Ductile Iron Ni	ASTM A351 CF8M ASTM A536-3Ni
5	22S	Split Pin	Stainless Steel	ASTM A276-304
6	22H	Hanger Pin	Stainless Steel	ASTM A276-304
7	14	Gasket	Non-Asbestos	
8	05	Hanger	Ductile Iron Ni	ASTM A536-3Ni
9	21	Washer	Stainless Steel	ASTM A276-304
10	27	Nut	Stainless Steel	ASTM A276-304
11	28F	Full Thread Stud	Stainless Steel	ASTM A276-304
12	02	Cover	Cast Iron Ni	3% Nickel
13	28H	Hexa.Head Bolt	Steel	ASTM A307-A
14	27	Nut	Steel	ASTM A307-A
15	01	Body	Cast Iron	ASTM A126-B
16	05	Hanger	Ductile Iron Ni	ASTM A536-3Ni
17	22H	Hanger Pin	Stainless Steel	ASTM A276-304
18	14S	Gasket	Non-Asbestos	
19	28P	Side Plug	Stainless Steel	ASTM A276-304

■ Body has five Tapping Bosses.

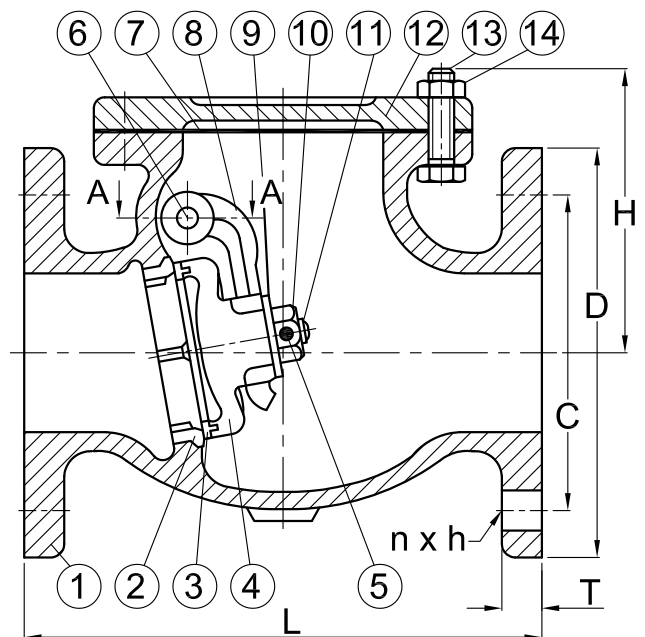
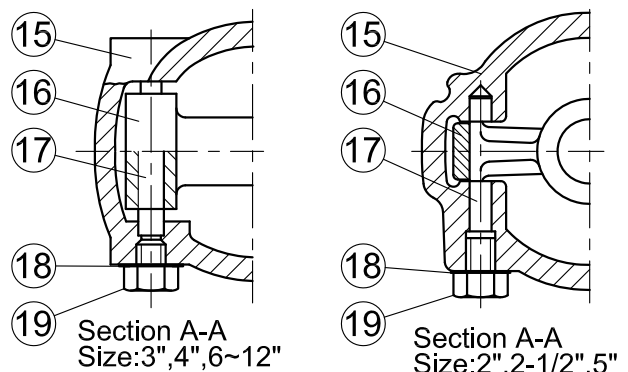


Fig: 763Ni

Nominal Size	Dimensions				Unit: inch		Net Wt. lbs.
	H	L	C	D	T	n x h	
2"	4.65	8.0	4¾	6	5/8	4x¾	25
2-1/2"	5.37	8.5	5½	7	11/16	4x¾	36
3"	5.77	9.5	6	7½	¾	4x¾	46
4"	6.65	11.5	7½	9	15/16	8x¾	81
5"	7.78	13.0	8½	10	15/16	8x7/8	115
6"	8.47	14.0	9½	11	1	8x7/8	150
8"	10.40	19.5	11¾	13½	1 1/8	8x7/8	253
10"	11.91	24.5	14¼	16	1 3/16	12x1	442
12"	13.52	27.5	17	19	1 ¼	12x1	638

■ Note: Design and materials are subject to change without notice.



EVER METAL INDUSTRY CO., LTD

CLASS 100S 3%NICKEL IRON BODY CHECK

- Bolted Bonnet, Horizontal Swing, Renewable Seat and Disc
- Conforms to MSS SP-71 Type 1, Flanged End and Drilling to ANSI B16.1
- Working Pressure:
100 PSI Steam to 350° F or 177° C
150 PSI Non-Shock Cold Water, Oil or Gas to -20° F to 150° F or -29° C to 66° C

MATERIAL LIST

Item No.	Part	Material	Specification
1 01	Body	Cast Iron	3% Nickel
2 08B	Body Seat Ring	Stainless Steel	ASTM A351 CF8M
3 08D	Disc Seat Ring	Stainless Steel	ASTM A351 CF8M
4 03	Disc	Ductile Iron Ni	ASTM A536-3Ni
5 22S	Split Pin	Stainless Steel	ASTM A276-304
6 28P	Side Plug	Stainless Steel	ASTM A276-304
7 22H	Hanger Pin	Stainless Steel	ASTM A276-304
8 14S	Gasket	Non-Asbestos	
9 14	Gasket	Non-Asbestos	
10 05	Hanger	Ductile Iron Ni	ASTM A536-3Ni
11 21	Washer	Stainless Steel	ASTM A276-304
12 28E	Eye Bolt	Steel	ASTM A307-A
13 27	Nut	Stainless Steel	ASTM A276-304
14 28F	Full Thread Stud	Stainless Steel	ASTM A276-304
15 02	Cover	Cast Iron Ni	3% Nickel
16 28H	Hex. Head Bolt	Steel	ASTM A307-A
17 27	Nut	Steel	ASTM A307-A

■ Body has five Tapping Bosses.

Nominal Size	Dimensions					Unit: inch		Net Wt. Lbs.
	H	L	C	D	T	n x h		
14"	15.75	31	18 ³ / ₄	21	1 ³ / ₈	12x1 ¹ / ₈	794	
16"	17.25	36	21 ¹ / ₄	23 ¹ / ₂	1 ⁷ / ₁₆	16x1 ¹ / ₈	1020	
18"	19.00	36	22 ³ / ₄	25	1 ⁹ / ₁₆	16x1 ¹ / ₄	1304	
20"	21.88	40	25	27 ¹ / ₂	1 ¹¹ / ₁₆	20x1 ¹ / ₄	1771	
24"	24.44	48	29 ¹ / ₂	32	1 ⁷ / ₈	20x1 ³ / ₈	2630	

■ Note: Design and materials are subject to change without notice.

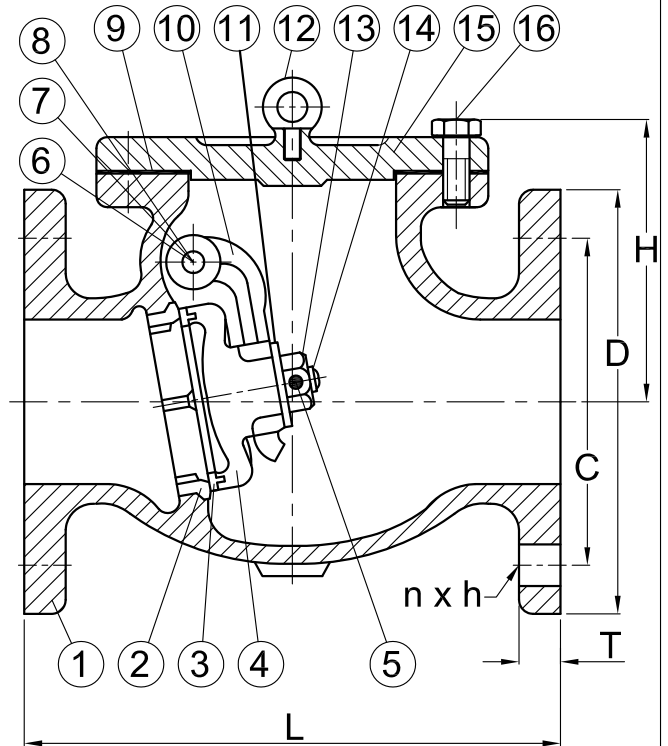
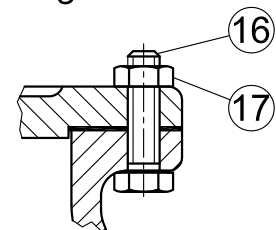


Fig: 763Ni



Size 14" Connection

EVA EVER METAL INDUSTRY CO.,LTD