

CAST IRON " Y " STRAINERS

- 250# flanged Connection
- Maximum Working Pressures

250 psi at 450° F

400 psi at 100° F

Dimensions

Nominal Size	Dimensions								Net Wt. lbs.
	H	L	C	D	R	T	M(NPT)	nxh	
2"	6 ³ / ₁₆	9 ⁷ / ₈	5	6 ¹ / ₂	4 ³ / ₁₆	7 ⁷ / ₈	1/2"	8x ³ / ₄	30
2-1/2"	7 ⁵ / ₈	11 ¹ / ₄	5 ⁷ / ₈	7 ¹ / ₂	4 ¹⁵ / ₁₆	1	1"	8x ⁷ / ₈	43
3"	8 ¹ / ₄	12 ¹ / ₂	6 ⁵ / ₈	8 ¹ / ₄	5 ¹¹ / ₁₆	1 ¹ / ₈	1"	8x ⁷ / ₈	63
4"	10 ¹ / ₁₆	14 ⁷ / ₈	7 ⁷ / ₈	10	6 ¹⁵ / ₁₆	1 ¹ / ₄	1 ¹ / ₄ "	8x ⁷ / ₈	98
5"	12 ¹ / ₂	17 ¹⁵ / ₁₆	9 ¹ / ₄	11	8 ⁵ / ₁₆	1 ³ / ₈	1 ¹ / ₄ "	8x ⁷ / ₈	149
6"	14 ⁵ / ₁₆	20 ³ / ₈	10 ⁵ / ₈	12 ¹ / ₂	9 ¹¹ / ₁₆	1 ⁷ / ₁₆	1 ¹ / ₂ "	12x ⁷ / ₈	209
8"	17 ³ / ₈	24	13	15	11 ¹⁵ / ₁₆	1 ⁵ / ₈	2"	12x1	315
10"	20 ⁷ / ₈	29 ¹ / ₂	15 ¹ / ₄	17 ¹ / ₂	14 ¹ / ₁₆	1 ⁷ / ₈	2"	16x1 ¹ / ₈	524
12"	23 ⁹ / ₁₆	33 ³ / ₄	17 ³ / ₄	20 ¹ / ₂	16 ⁷ / ₁₆	2	2"	16x1 ¹ / ₄	702



■ Note: Design and materials are subject to change without notice.

MATERIAL LIST

Item No.	Part	Material	Specification
1 01	Body	Cast Iron	ASTM A126-B
2 23	Screen	Stainless Steel	SUS 304
3 14	Gasket	Non-Asbestos	
4 02	Cover	2"~6" Cast Iron	ASTM A126-B
		8"~12" Ductile Iron	ASTM A536
5 28H	Hexagon Head Bolt	Steel	ASTM A307-A
6 28P	Plug	Malleable Iron	ASTM A197-B

STANDARD SCREENS:

SIZES	Openings
2"~3"	0.045perf
4"~12"	0.125perf

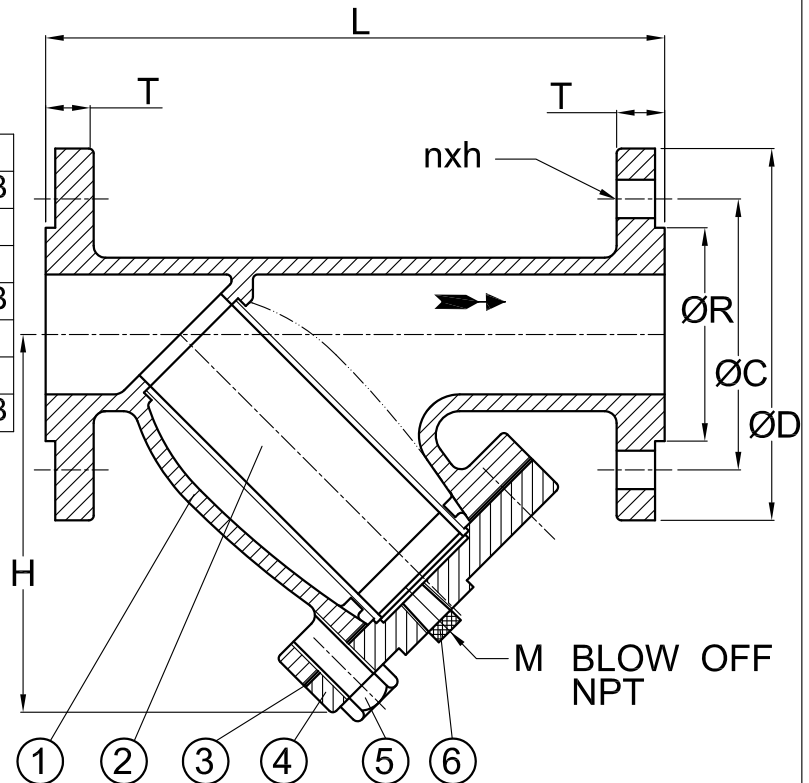


Fig: 774A



EVER METAL INDUSTRY CO.,LTD